

ADDENDUM No. 3 – FEBRUARY 3, 2023

RE: Roswell Independent School District – AESC HVAC Upgrades

FROM: McClain + Yu Architecture & Design
2010 Ridgecrest Dr. SE
Albuquerque, NM 87108

TO: ALL BIDDERS OF RECORD

This Addendum forms part of the Contract Documents and modifies or supplements the Project Manual or the Drawings as indicated below. All other provisions of the Contract Documents shall remain unchanged. This Addendum is hereby made a part of the Contract Documents to the same extent as those provisions contained in the original documents and all itemized listings thereof. Bidders shall acknowledge receipt of this Addendum in the appropriate space on the Bid Form.

PREPROPOSAL CONFERENCE

1. A non-mandatory preproposal conference was held at 2:00 PM on February 2, 2023 at the site. See meeting agenda and sign in sheet, attached. Submit all questions and prior approval requests in writing.
2. A tour of the existing building was conducted. For offerors wanting to make additional visits to the building, please contact Chris Thweatt or Jeremy Sanchez to schedule a visit.

PRIOR APPROVALS: None

PROJECT MANUAL:

1. ROLLER WINDOW SHADES:

a. ADD 12 24 13 ROLLER WINDOW SHADES, ATTACHED, TO THE PROJECT MANUAL. THIS SPECIFICATION HAS NOT BEEN ISSUED PREVIOUSLY.

DRAWING SHEETS:

The following are modifications made to the Drawings:

1. SHEET G-003 CONSTRUCTION PHASING DIAGRAM
 - a. SEE REVISED PHASING DIAGRAM
 - b. NOTE: ENTIRE BUILDING WILL BE MADE AVAILABLE TO CONSTRUCTION ACTIVITIES. PHASING OF CONSTRUCTION ACTIVITIES (TO ACCOMMODATE BUILDING OCCUPANTS PARTIALLY REMAINING IN THE BUILDING) WILL NOT BE NECESSARY. NOTICE TO PROCEED AND SUBSTANTIAL COMPLETION REMAIN THE SAME. CONTRACTOR WILL NOT BE ALLOWED TO MOBILISE ON SITE UNTIL JUNE 1, 2023.

McClain + Yu Architecture & Design
2010 Ridgecrest Dr. SE
Albuquerque NM 87108
(505) 266-2142
www.mcclain-yu.com

2. SHEET A-503 DETAILS
 - a. DETAIL A6/A-503 - MODIFY DETAIL TO REFLECT PIPE AND DUCT INSULATION STOPPING AND STARTING AT THE WALL PENETRATION. WALL PENETRATION NEED NOT ACCOMMODATE DIMENSION FOR INSULATION. THIS HAS BEEN CONFIRMED WITH AND ACCEPTED BY CID.
 - b. DETAIL B4/A-503 - MODIFY DETAIL TO REFLECT PIPE AND DUCT INSULATION STOPPING AND STARTING AT THE WALL PENETRATION. WALL PENETRATION NEED NOT ACCOMMODATE DIMENSION FOR INSULATION. THIS HAS BEEN CONFIRMED WITH AND ACCEPTED BY CID.
 - c. ADD DETAIL D4/A-503 - DETAIL ADDED TO SHOW TYPICAL DUCT OR PIPE PENETRATION AT CONCRETE WALL. PIPE AND DUCT INSULATION STOPS AND STARTS AT THE WALL PENETRATION. WALL PENETRATION NEED NOT ACCOMMODATE DIMENSION FOR INSULATION. THIS HAS BEEN CONFIRMED WITH AND ACCEPTED BY CID.
3. SHEET A-603 DOOR AND WINDOW SCHEDULES AND ELEVATION
 - a. SEE REVISED DOOR SCHEDULE TO INCLUDE
 - i. DOOR CH01 REVISED HEIGHT AND COMMENTS
 - ii. REVISED HEAD, JAMB & SILL DETAILS PER QUESTION 2 BELOW.
4. SHEET M-602 MECHANICAL EQUIPMENT SCHEDULES
 - a. UNDER DEDICATED OUTDOOR AIR SYSTEM UNIT SCHEDULE ADD THE FOLLOWING TO THE NOTES:
 5. DIGITAL INVERTER COMPRESSOR SHALL MODULATE TO MAINTAIN THE TEMPERATURE SETPOINT BASED ON THE FEEDBACK FROM SUPPLY AIR TEMPERATURE SENSOR LOCATED DOWNSTREAM OF DIRECT EXPANSION COIL.
 6. GAS FIRED SECTION SHALL BE PROVIDED WITH FULL MODULATION.

QUESTIONS AND CLARIFICATIONS:

The following are responses to questions that have been submitted in writing:

- 1)

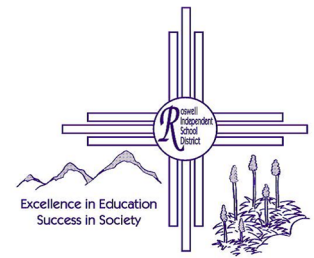
Q: Will there be any specs for door hardware shown on sheet A602?
A: A specification will not be issued. Please see hardware specification below the DOOR SCHEDULE on Sheet A-602 DOOR AND WINDOW SCHEDULES AND ELEVATIONS
- 2)

Q: We are missing Head and Jamb details D3 and E3 A-503 from sheet A-602.
A: Please see revised sheet A-602 DOOR AND WINDOW SCHEDULES AND ELEVATIONS for correction on detail locations.
- 3)

Q: Is door height correct for door CH01 on door schedule sheet A602?
A: Please see revised sheet A-602 DOOR AND WINDOW SCHEDULES AND ELEVATIONS for correction on door height. Please note also added comment in schedule indicating that this door receives a 4" high frame to module out with brick and CMU.

END OF ADDENDUM

ROSWELL INDEPENDENT SCHOOL DISTRICT AESC HVAC UPGRADES



RFP #23-04 – Pre-Proposal Conference - Non-Mandatory

February 02, 2023, 2:00 PM (local time)
RISD Board Room, 300 N. Kentucky, Roswell, NM

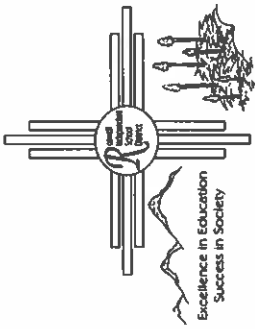
1. Introductions and Sign-in
2. Proposal Due Date is FEBRUARY 23, 2023, 2:00 p.m. (local time)
3. RFP Process
 - a. Project Information URL:
https://www.risd.k12.nm.us/finance_and_operations/business_services/purchasing_bids_rfp
 - b. Conditions Governing the Procurement
 - c. RFP Response Format and Organization
 - i. Four Identical Hardcopies + 1 USB Digital Copy
 - ii. Volume I: Technical Proposal
 - iii. Volume II: Price Proposal
 - iv. Price Proposal Form
4. Questions and Prior Approval requests must be received by the Architect - Feb 07, 2023 2:00PM
5. Last Day to issue an Addendum is February 10, 2023.
6. Construction Schedule –
 - a. Anticipated Start of Construction April 03, 2023
 - b. Contract Time 394 consecutive calendar days
 - c. \$500/day Liquidated Damages.
7. Building Permit Status
8. Wage Decision – NM Dept of Workforce Solutions
9. Project Scope – Base Bid and Two Additive Alternates.
10. Project Challenges:
 - Work on active Administration Building / Work Sequence
 - Furniture Relocation
 - Roofing Abatement/Disposal
 - Long Lead Items
11. Project Budget – \$6,191,800
12. 00 22 00 - Information Available to all Bidders
13. 01 00 00 – General Requirements
14. 01 10 00 – Summary - Owner’s Occupancy Requirements
15. 01 21 00 - Allowances
16. 01 23 00 - Alternates
17. Unit Costs (Price Proposal Form)
18. 01 63 00 – Substitution Request Form
19. Questions: All questions are to be submitted in writing.
 - a. Procedural/Procurement Questions:
Christopher Thweatt – Support & Transportation Services Coordinator
cthweatt@risd.k12.nm.us
(575) 627-2579
 - b. Technical/Project Questions:
Raimund McClain: Project Architect - raimund@mcclain-yu.com
McClain + Yu Architecture and Design (505) 266-2142
20. Questions and Answers
21. Site Tour

Roswell Independent School District

SIGN IN SHEET

RFP #23-04 AESC HVAC Upgrades

Opening: February 23, 2023 @ 2:00 pm RISD Old Wing Room # 201



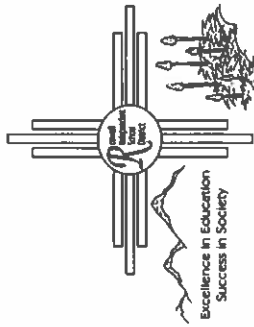
Name	Company	E-mail Address	Telephone
Eddie T MASTERSON	RHODES CO	Ewert@RhodesCo.Com	575-626-1146
Richard Montoya	RHODES CO	R.Montoya@RhodesCo.Com	575-9101524

Roswell Independent School District

SIGN IN SHEET

RFP #23-04 AESC HVAC Upgrades

Opening: February 23, 2023 @ 2:00 pm RISD Old Wing Room # 201



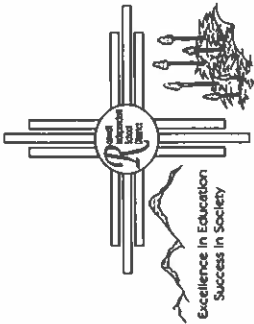
Name	Company	E-mail Address	Telephone
SEAN BENKOWITZ	RISD		
Trish Andrews	Holloway	office@hollowaycc.com	623-6808
Jason Holloway	Holloway	jason@hollowaycc.com	626-4633
Wes Holloway	Holloway	wes@hollowaycc.com	626-1564
William A. MARTINEZ	LA VENTANA GLASS	laventanaglass@gmail.com	575-888-7007

Roswell Independent School District

SIGN IN SHEET

RFP #23-04 AESC HVAC Upgrades

Opening: February 23, 2023 @ 2:00 pm RISD Old Wing Room # 201



Name	Company	E-mail Address	Telephone
DANNY SMITH	WWR INC	DANNYS@WWRINC.COM	575-760-7171
Chris Thweatt	RISD	cthweatt@risc.k12.nv.us	(575) 627-2528

SECTION 12 24 13 - ROLLER WINDOW SHADES

PART 1 - GENERAL

1.1 RELATED DOCUMENTS

- A. Drawings and general provisions of the Contract, including General and Supplementary Conditions and Division 01 Specification Sections, apply to this Section.

1.2 SUMMARY

- A. Section Includes:
 - 1. Manually operated roller shades with single rollers.

1.3 ACTION SUBMITTALS

- A. Product Data: For each type of product.
 - 1. Include styles, material descriptions, construction details, dimensions of individual components and profiles, features, finishes, and operating instructions for roller shades.
- B. Shop Drawings: Show fabrication and installation details for roller shades, including shadeband materials, their orientation to rollers, and their seam and batten locations.
- C. Samples: For each exposed product and for each color and texture specified, 10 inches (250 mm) long.
- D. Samples for Initial Selection: For each type and color of shadeband material.
 - 1. Include Samples of accessories involving color selection.
- E. Samples for Verification: For each type of roller shade.
 - 1. Shadeband Material: Not less than 10 inches square. Mark inside face of material if applicable.
- F. Roller-Shade Schedule: Use same designations indicated on Drawings.

1.4 INFORMATIONAL SUBMITTALS

- A. Qualification Data: For Installer.
- B. Product Certificates: For each type of shadeband material, signed by product manufacturer.

- C. Product Test Reports: For each type of shadeband material, for tests performed by manufacturer and witnessed by a qualified testing agency.

1.5 CLOSEOUT SUBMITTALS

- A. Maintenance Data: For roller shades to include in maintenance manuals.

1.6 QUALITY ASSURANCE

- A. Installer Qualifications: Fabricator of products.

1.7 DELIVERY, STORAGE, AND HANDLING

- A. Deliver roller shades in factory packages, marked with manufacturer, product name, and location of installation using same designations indicated on Drawings.

1.8 FIELD CONDITIONS

- A. Environmental Limitations: Do not install roller shades until construction and finish work in spaces, including painting, is complete and dry and ambient temperature and humidity conditions are maintained at the levels indicated for Project when occupied for its intended use.
- B. Field Measurements: Where roller shades are indicated to fit to other construction, verify dimensions of other construction by field measurements before fabrication and indicate measurements on Shop Drawings. Allow clearances for operating hardware of operable glazed units through entire operating range. Notify Architect of installation conditions that vary from Drawings. Coordinate fabrication schedule with construction progress to avoid delaying the Work.

PART 2 - PRODUCTS

2.1 MANUFACTURERS

- A. Manufacturers: Subject to compliance with requirements, provide products by one of the following
 1. Draper Inc. (Basis of Design)
 - a. FlexShade-tm
 2. MechoShade Systems, Inc.
- B. Source Limitations: Obtain roller shades from single source from single manufacturer.

2.2 MANUALLY OPERATED SHADES WITH SINGLE ROLLERS

- A. Chain-and-Clutch Operating Mechanisms: With continuous-loop bead chain and clutch that stops shade movement when bead chain is released; permanently adjusted and lubricated.
 - 1. Bead Chains: Manufacturer's standard
 - a. Loop Length: Full length of roller shade.
 - b. Limit Stops: Provide upper and lower ball stops.
 - c. Chain-Retainer Type: Chain tensioner, jamb mounted.
 - 2. Spring Lift-Assist Mechanisms: Manufacturer's standard for balancing roller-shade weight and lifting heavy roller shades.
 - a. Provide for shadebands that weigh more than 10 lb or for shades as recommended by manufacturer, whichever criteria are more stringent.
- B. Rollers: Corrosion-resistant steel or extruded-aluminum tubes of diameters and wall thicknesses required to accommodate operating mechanisms and weights and widths of shadebands indicated without deflection. Provide with permanently lubricated drive-end assemblies and idle-end assemblies designed to facilitate removal of shadebands for service.
 - 1. Roller Drive-End Location: Right side of inside face of shade.
 - a.
 - 2. Direction of Shadeband Roll: Regular, from back of roller.
 - 3. Shadeband-to-Roller Attachment: Manufacturer's standard method.
- C. Mounting Hardware: Brackets or endcaps, corrosion resistant and compatible with roller assembly, operating mechanism, installation accessories, and mounting location and conditions indicated.
- D. Roller-Coupling Assemblies: Coordinated with operating mechanism and designed to join up to three inline rollers into a multiband shade that is operated by one roller drive-end assembly.
- E. Shadebands:
 - 1. Shadeband Material: Light-filtering fabric.
 - 2. Shadeband Bottom (Hem) Bar: Steel or extruded aluminum.
 - a. Type: Enclosed in sealed pocket of shadeband material: .Exposed with endcaps and integral light seal at bottom where it meets the sill.
- F. Installation Accessories:
 - 1. Exposed Headbox: Rectangular, extruded-aluminum enclosure including front fascia, top and back covers, endcaps, and removable bottom closure.
 - a. Height: Manufacturer's standard height required to enclose roller and shadeband when shade is fully open, but not less than 4 inches height indicated on Drawings.

2. Endcap Covers: To cover exposed endcaps.
3. Side Channels: Where field conditions do not permit sufficient overlap for light control.
 - a. With light seals and designed to eliminate light gaps at sides of shades as shades are drawn down. Provide side channels with shadeband guides or other means of aligning shadebands with channels at tops.
4. Installation Accessories Color and Finish: White with Mfg.'s standard finish.

2.3 SHADEBAND MATERIALS

- A. Shadeband Material Flame-Resistance Rating: Comply with NFPA 701. Testing by a qualified testing agency. Identify products with appropriate markings of applicable testing agency.
- B. Light-Filtering Fabric: Woven fabric, stain and fade resistant.
 1. Source: Draper SheerWeave – tm by Phifer. SW 2500 Series (Basis of Design)
 - a. SW 2500 / SW 2510 – 1%.
 2. Type: Vinyl coated 500 denier fiberglass and woven into a 2 x 2 basket weave.
 3. Thickness: Manufacturers standard.
 4. Color: Oyster

2.4 ROLLER-SHADE FABRICATION

- A. Product Safety Standard: Fabricate roller shades to comply with WCMA A 100.1, including requirements for flexible, chain-loop devices; lead content of components; and warning labels.
- B. Unit Sizes: Fabricate units in sizes to fill window and other openings as follows, measured at 74 deg F (23 deg C):
 1. Outside of Jamb Installation: Width and length as indicated, with terminations between shades of end-to-end installations at centerlines of mullion or other defined vertical separations between openings.
 - a. Field verify site configuration.
- C. Shadeband Fabrication: Fabricate shadebands without battens or seams to extent possible except as follows:
 1. Vertical Shades: Where width-to-length ratio of shadeband is equal to or greater than **1:4**, provide battens and seams at uniform spacings along shadeband length to ensure shadeband tracking and alignment through its full range of movement without distortion of the material.

PART 3 - EXECUTION

3.1 EXAMINATION

- A. Examine substrates, areas, and conditions, with Installer present, for compliance with requirements for installation tolerances, operational clearances, and other conditions affecting performance of the Work.
- B. Proceed with installation only after unsatisfactory conditions have been corrected.

3.2 ROLLER-SHADE INSTALLATION

- A. Install roller shades level, plumb, and aligned with adjacent units according to manufacturer's written instructions.

3.3 ADJUSTING

- A. Adjust and balance roller shades to operate smoothly, easily, safely, and free from binding or malfunction throughout entire operational range.

3.4 CLEANING AND PROTECTION

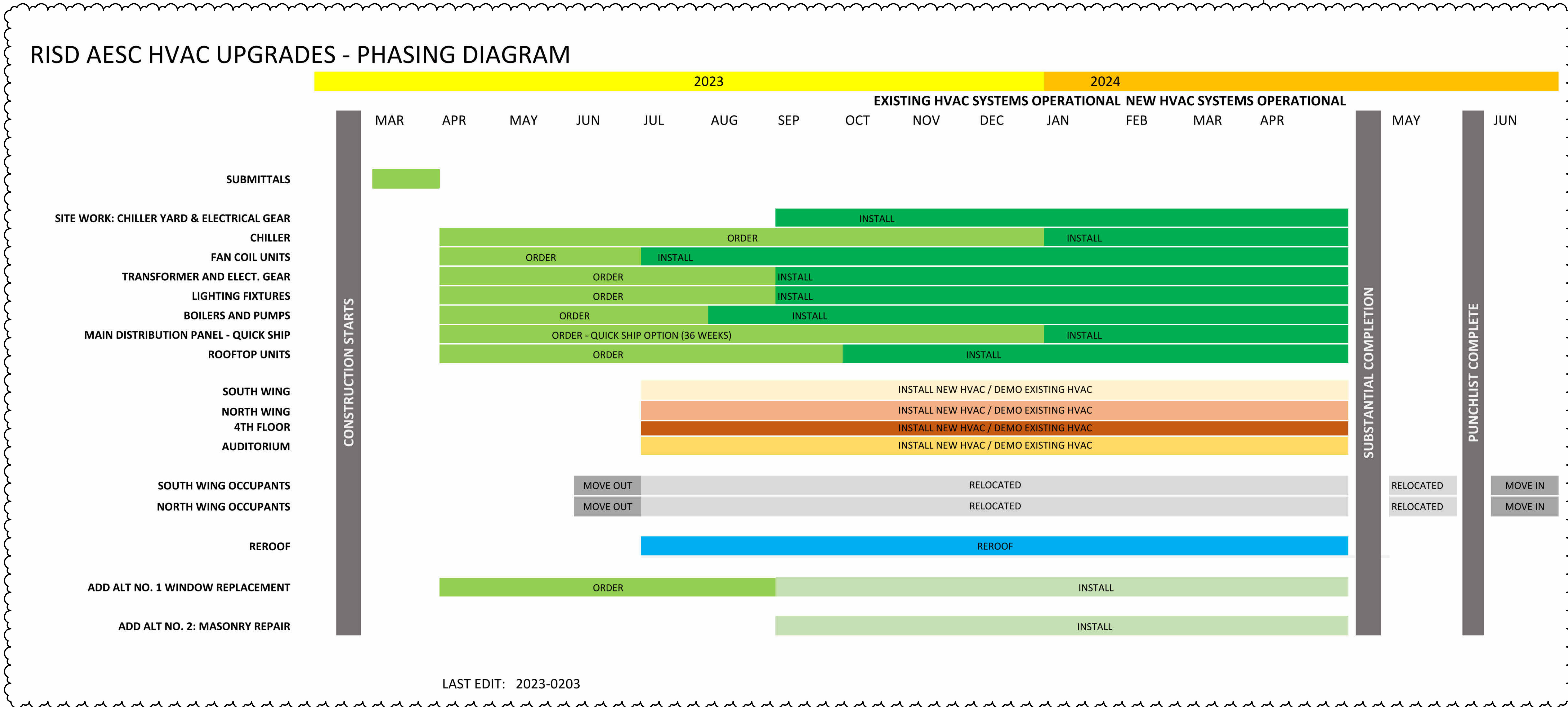
- A. Clean roller-shade surfaces after installation, according to manufacturer's written instructions.
- B. Provide final protection and maintain conditions, in a manner acceptable to manufacturer and Installer that ensure that roller shades are without damage or deterioration at time of Substantial Completion.
- C. Replace damaged roller shades that cannot be repaired, in a manner approved by Architect, before time of Substantial Completion.

END OF SECTION 12 24 13

GENERAL SHEET NOTES
A. CONSTRUCTION PHASING DIAGRAM SUGGEST DURATIONS WHICH REQUIRE REVIEW & CONFIRMATION BY THE GENERAL CONTRACTOR.

McClain + Yu Architecture & Design
2010 Ridgcrest Dr SE
Albuquerque, NM 87108
505.266.2142
info@mccclain-yu.com
www.mccclain-yu.com

RISD AESC HVAC UPGRADES -
THIS DIAGRAM IS PROVIDED BASED ON THE OWNER'S SCHEDULE REQUIREMENTS AND SHALL NOT BE MODIFIED UNLESS AGREED TO BY THE OWNER. SEE ALSO GENERAL NOTE A.



PROJECT
AESC HVAC UPGRADES

OWNER
ROSWELL INDEPENDENT SCHOOL DISTRICT

ADDRESS
300 N. KENTUCKY, ROSWELL, NM 88201

PROJECT STATUS
CONSTRUCTION DOCUMENTS

DATE	NO.	DESCRIPTION
02-03-2023	1	ADDENDUM #1

Date: JANUARY 20, 2023
Project Number: 2022-011
Project File:
Drawn By: JBS
Checked By: RM
Copyright ©
McCLAIN + YU ARCHITECTURE AND DESIGN
SHEET TITLE

CONSTRUCTION PHASING DIAGRAM

SHEET
G-003

CONSULTANTS



PROJECT

**AESC HVAC
UPGRADES**

OWNER

**ROSWELL
INDEPENDENT
SCHOOL DISTRICT**

ADDRESS

**300 N. KENTUCKY,
ROSWELL, NM 88201**

PROJECT STATUS

**CONSTRUCTION
DOCUMENTS**

DATE	NO.	DESCRIPTION
02-03-2023	1	ADDENDUM #1

Date: JANUARY 20, 2023

Project Number: 2022-011

Project File: SH, JBS, MR

Drawn By: MH, RM

Checked By:

Copyright © MCCLAIN + YU ARCHITECTURE AND DESIGN

SHEET TITLE

DETAILS

SHEET

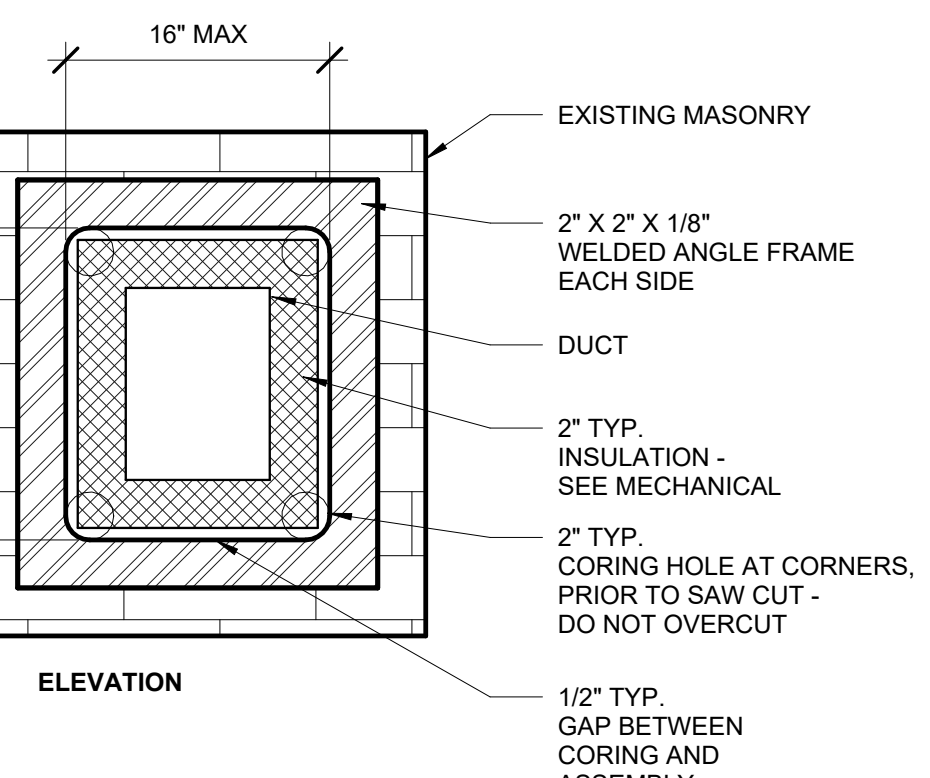
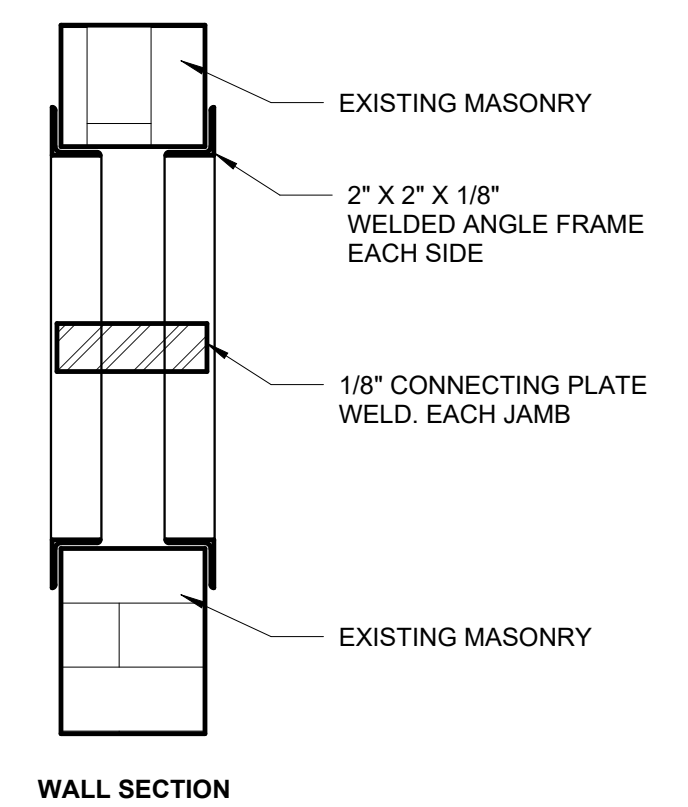
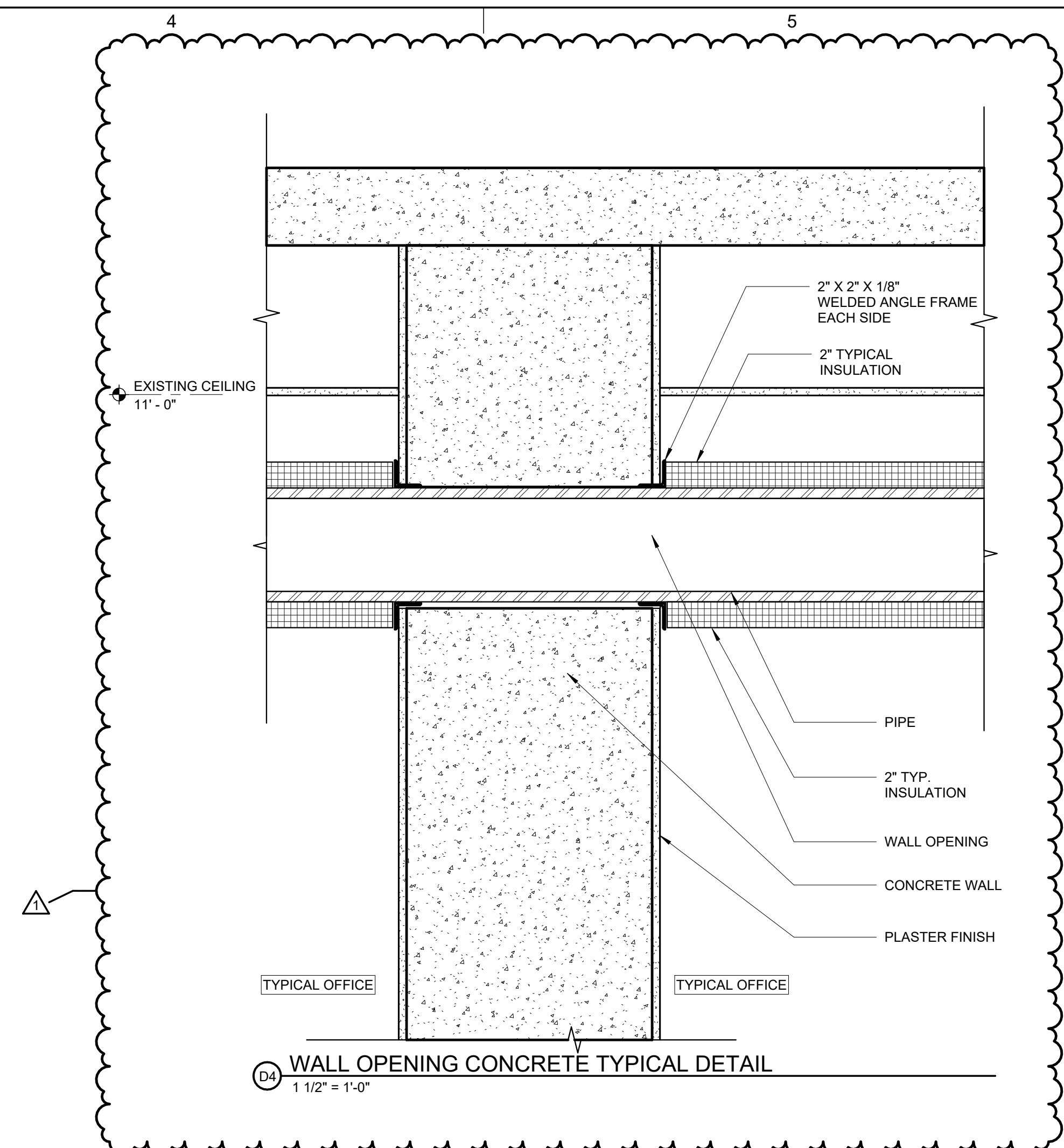
A-503

GENERAL SHEET NOTES

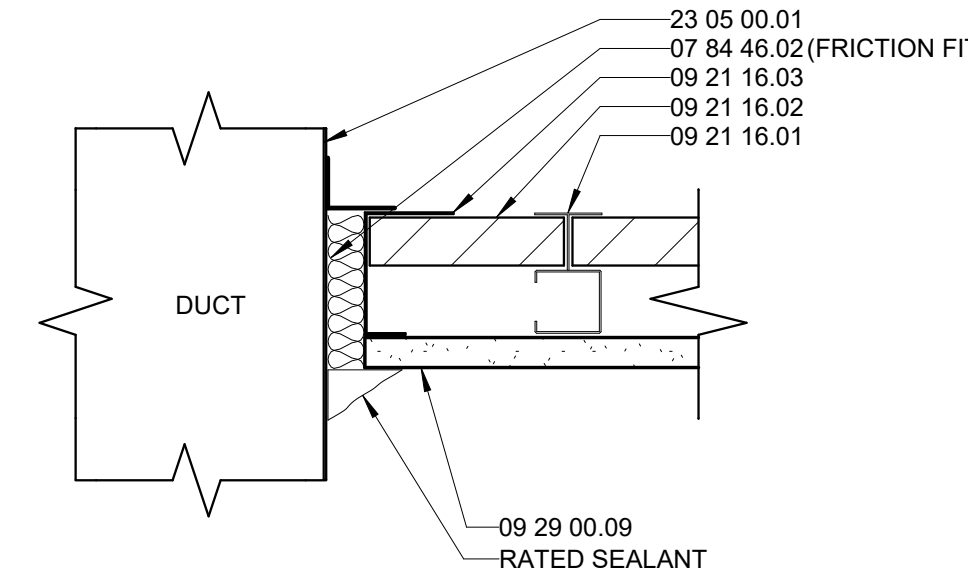
A. NONE

KEYNOTE LEGEND

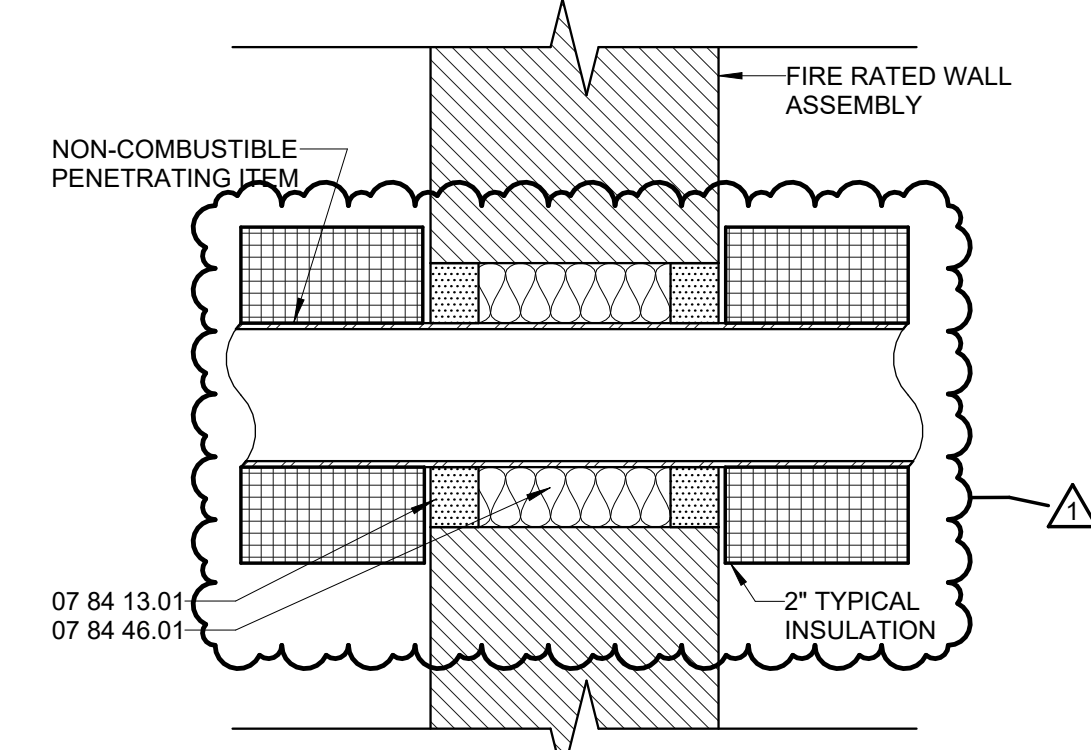
- 07 84 13.01 FIRE STOP SEALANT
- 07 84 46.01 FIRE SAFING INSULATION
- 07 84 46.02 IMPALING CUP ADHERED TO DECK EDGE ANGLE
- 09 21 16.01 2 1/2" X 20 GA METAL C-H STUD
- 09 21 16.02 1" GYPSUM BOARD LINER
- 09 21 16.03 2 1/2" X 20 GA J-RUNNER
- 09 29 00.09 5/8" TYPE 'X' GYPSUM BOARD - SEE PARTITION TYPES
- 23 05 00.01 DUCTS - SEE MECHANICAL DRAWINGS



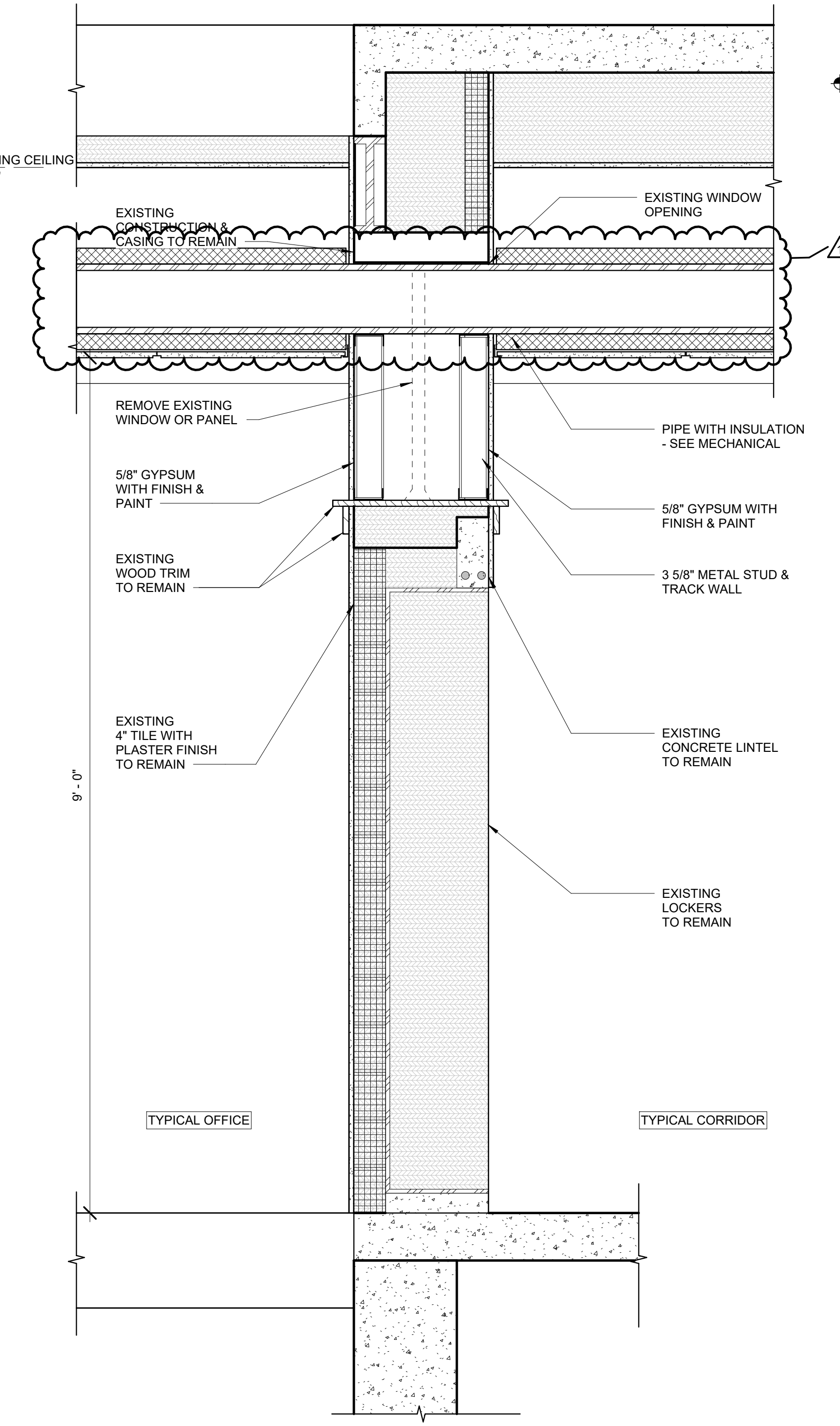
DUCT EXISTING MASONRY - WALL PENETRATION DETAIL
1 1/2" = 1'-0"



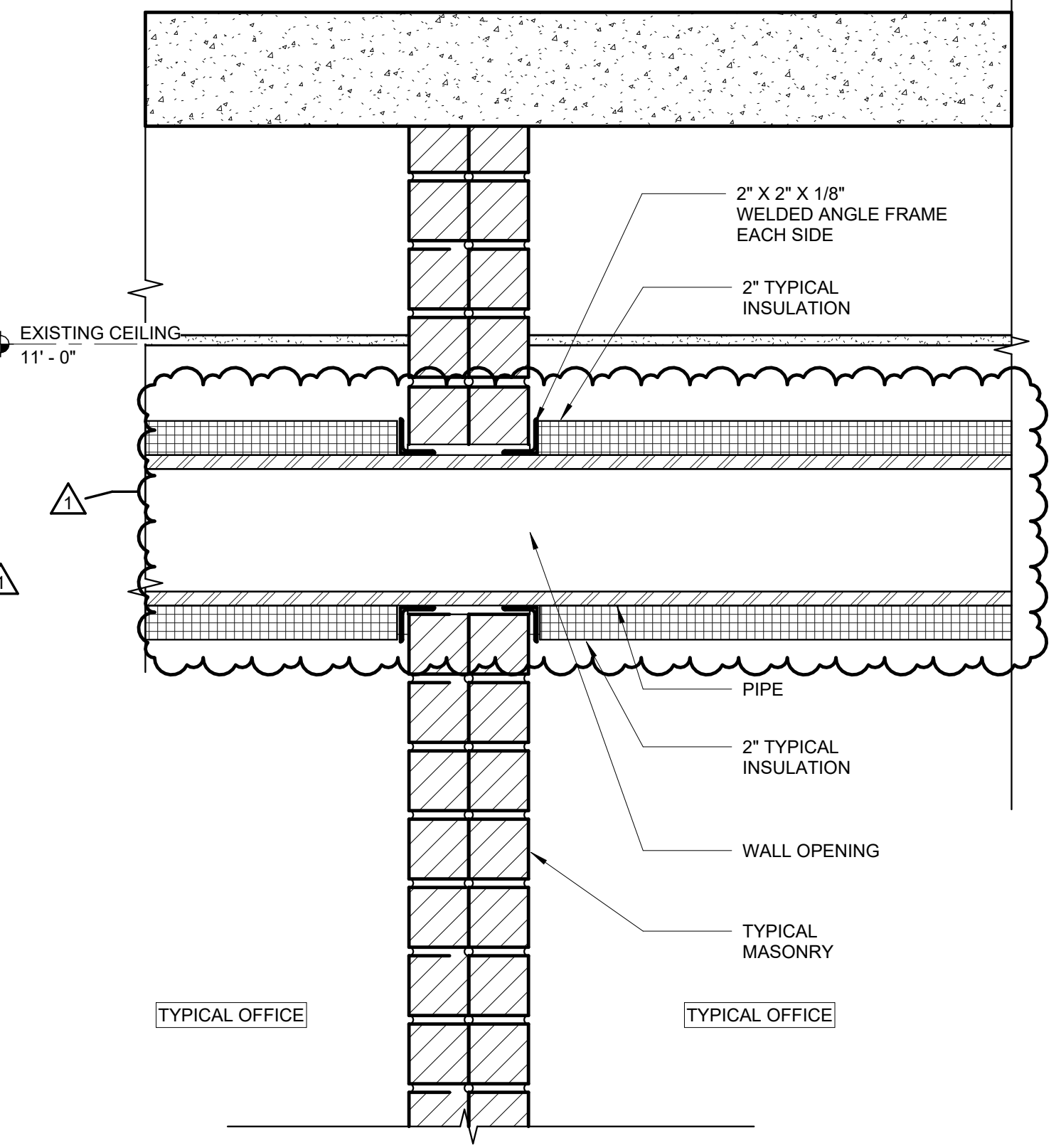
DETAIL - DUCT PENETRATION
3" = 1'-0"



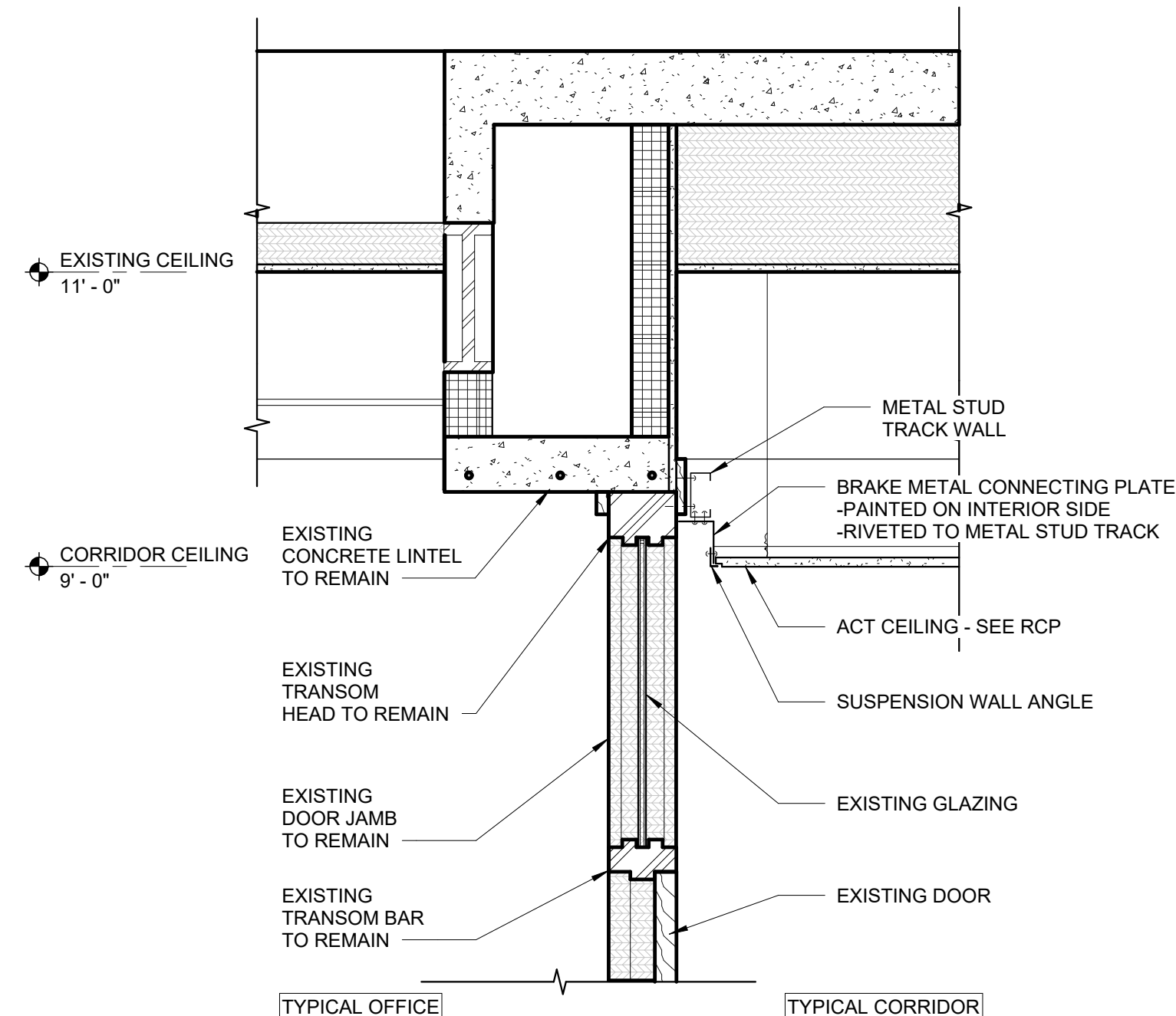
RATED WALL PENETRATION PIPES
3" = 1'-0"



SECTION DETAIL - HIGH WINDOW MECHANICAL PENETRATION
1" = 1'-0"



WALL OPENING MASONRY TYPICAL DETAIL
1 1/2" = 1'-0"



SECTION DETAIL - DOOR TRANSOM PARTIAL COVER
1" = 1'-0"

C:\Users\Michael\Documents\RISD AESC_studio\0424\HP8.rvt 2/3/2023 2:43:43 PM

GENERAL SHEET NOTES
A. NONE

McClain + Yu Architecture & Design
2010 Ridgcrest Dr SE
Albuquerque, NM 87108
505.266.2142
info@mcclain-yu.com
www.mcclain-yu.com

WINDOW SCHEDULE									
TYPE MARK	COUNT	SIZE	MATERIAL	GLAZING	INT FINISH	EXT FINISH	ROLLER SHADE	COMMENTS	
1	2	SEE WINDOW TYPES	ACWD	1" IGU, CLR. TEMPERED WHERE REQ'D	STAINED OAK	KYNAR	YES	2 WINDOWS INSTALLED AROUND EXISTING CENTER WOOD JAMB	
2	11	SEE WINDOW TYPES	ACWD	1" IGU, CLR. TEMPERED WHERE REQ'D	STAINED OAK	KYNAR	YES	2 WINDOWS INSTALLED AROUND EXISTING CENTER WOOD JAMB	
3	2	SEE WINDOW TYPES	ACWD	1" IGU, CLR. TEMPERED WHERE REQ'D	STAINED OAK	KYNAR	YES	2 WINDOWS INSTALLED AROUND EXISTING CENTER WOOD JAMB	
4	4	SEE WINDOW TYPES	ACWD	1" IGU, CLR. TEMPERED WHERE REQ'D	STAINED OAK	KYNAR	YES	2 WINDOWS INSTALLED AROUND EXISTING CENTER WOOD JAMB	
5	8	SEE WINDOW TYPES	ACWD	1" IGU, CLR. TEMPERED WHERE REQ'D	STAINED OAK	KYNAR	YES	2 WINDOWS INSTALLED AROUND EXISTING CENTER WOOD JAMB	
6A	2	SEE WINDOW TYPES	ACWD	1" IGU, CLR. TEMPERED WHERE REQ'D	STAINED OAK	KYNAR	YES	2 WINDOWS INSTALLED AROUND EXISTING CENTER WOOD JAMB	
6	1	SEE WINDOW TYPES	ACWD	1" IGU, CLR. TEMPERED WHERE REQ'D	STAINED OAK	KYNAR	YES	2 WINDOWS INSTALLED AROUND EXISTING CENTER WOOD JAMB	
7	4	SEE WINDOW TYPES	ACWD	1" IGU, CLR. TEMPERED WHERE REQ'D	STAINED OAK	KYNAR	YES	2 WINDOWS INSTALLED AROUND EXISTING CENTER WOOD JAMB	
10	4	SEE WINDOW TYPES	ACWD	1" IGU, CLR. TEMPERED WHERE REQ'D	STAINED OAK	KYNAR	YES	2 WINDOWS INSTALLED AROUND EXISTING CENTER WOOD JAMB	
11	2	SEE WINDOW TYPES	ACWD	1" IGU, CLR. TEMPERED WHERE REQ'D	STAINED OAK	KYNAR	YES	2 WINDOWS INSTALLED AROUND EXISTING CENTER WOOD JAMB	
12	2	SEE WINDOW TYPES	ACWD	1" IGU, CLR. TEMPERED WHERE REQ'D	STAINED OAK	KYNAR	YES	2 WINDOWS INSTALLED AROUND EXISTING CENTER WOOD JAMB	
13	7	SEE WINDOW TYPES	ACWD	1" IGU, CLR. TEMPERED WHERE REQ'D	STAINED OAK	KYNAR	YES	2 WINDOWS INSTALLED AROUND EXISTING CENTER WOOD JAMB	
13A	5	SEE WINDOW TYPES	ACWD	1" IGU, CLR. TEMPERED WHERE REQ'D	STAINED OAK	KYNAR	YES	2 WINDOWS INSTALLED AROUND EXISTING CENTER WOOD JAMB	
14	15	SEE WINDOW TYPES	ACWD	1" IGU, CLR. TEMPERED WHERE REQ'D	STAINED OAK	KYNAR	YES	2 WINDOWS INSTALLED AROUND EXISTING CENTER WOOD JAMB	
14A	9	SEE WINDOW TYPES	ACWD	1" IGU, CLR. TEMPERED WHERE REQ'D	STAINED OAK	KYNAR	YES	2 WINDOWS INSTALLED AROUND EXISTING CENTER WOOD JAMB	
15	2	SEE WINDOW TYPES	ACWD	1" IGU, CLR. TEMPERED WHERE REQ'D	STAINED OAK	KYNAR	YES	2 WINDOWS INSTALLED AROUND EXISTING CENTER WOOD JAMB	
16	10	SEE WINDOW TYPES	ACWD	1" IGU, CLR. TEMPERED WHERE REQ'D	STAINED OAK	KYNAR	YES	2 WINDOWS INSTALLED AROUND EXISTING CENTER WOOD JAMB	
16A	2	SEE WINDOW TYPES	ACWD	1" IGU, CLR. TEMPERED WHERE REQ'D	STAINED OAK	KYNAR	YES	2 WINDOWS INSTALLED AROUND EXISTING CENTER WOOD JAMB	
17	2	SEE WINDOW TYPES	ACWD	1" IGU, CLR. TEMPERED WHERE REQ'D	STAINED OAK	KYNAR	YES	2 WINDOWS INSTALLED AROUND EXISTING CENTER WOOD JAMB	
17A	6	SEE WINDOW TYPES	ACWD	1" IGU, CLR. TEMPERED WHERE REQ'D	STAINED OAK	KYNAR	YES	2 WINDOWS INSTALLED AROUND EXISTING CENTER WOOD JAMB	
18	1	SEE WINDOW TYPES	ACWD	1" IGU, CLR. TEMPERED WHERE REQ'D	STAINED OAK	KYNAR	YES	2 WINDOWS INSTALLED AROUND EXISTING CENTER WOOD JAMB	
19	2	SEE WINDOW TYPES	ACWD	1" IGU, CLR. TEMPERED WHERE REQ'D	STAINED OAK	KYNAR	YES	2 WINDOWS INSTALLED AROUND EXISTING CENTER WOOD JAMB	
20	2	SEE WINDOW TYPES	ACWD	1" IGU, CLR. TEMPERED WHERE REQ'D	STAINED OAK	KYNAR	YES	2 WINDOWS INSTALLED AROUND EXISTING CENTER WOOD JAMB	
21	8	SEE WINDOW TYPES	ACWD	1" IGU, CLR. TEMPERED WHERE REQ'D	STAINED OAK	KYNAR	YES	2 WINDOWS INSTALLED AROUND EXISTING CENTER WOOD JAMB	
21A	4	SEE WINDOW TYPES	ACWD	1" IGU, CLR. TEMPERED WHERE REQ'D	STAINED OAK	KYNAR	YES	2 WINDOWS INSTALLED AROUND EXISTING CENTER WOOD JAMB	
22	3	SEE WINDOW TYPES	ACWD	1" IGU, CLR. TEMPERED WHERE REQ'D	STAINED OAK	KYNAR	YES	2 WINDOWS INSTALLED AROUND EXISTING CENTER WOOD JAMB	
22A	3	SEE WINDOW TYPES	ACWD	1" IGU, CLR. TEMPERED WHERE REQ'D	STAINED OAK	KYNAR	YES	2 WINDOWS INSTALLED AROUND EXISTING CENTER WOOD JAMB	
23	2	SEE WINDOW TYPES	ACWD	1" IGU, CLR. TEMPERED WHERE REQ'D	STAINED OAK	KYNAR	YES	2 WINDOWS INSTALLED AROUND EXISTING CENTER WOOD JAMB	
24	11	SEE WINDOW TYPES	ACWD	1" IGU, CLR. TEMPERED WHERE REQ'D	STAINED OAK	KYNAR	YES	2 WINDOWS INSTALLED AROUND EXISTING CENTER WOOD JAMB	
24A	2	SEE WINDOW TYPES	ACWD	1" IGU, CLR. TEMPERED WHERE REQ'D	STAINED OAK	KYNAR	YES	2 WINDOWS INSTALLED AROUND EXISTING CENTER WOOD JAMB	
25	3	SEE WINDOW TYPES	ACWD	1" IGU, CLR. TEMPERED WHERE REQ'D	STAINED OAK	KYNAR	YES	2 WINDOWS INSTALLED AROUND EXISTING CENTER WOOD JAMB	
25A	1	SEE WINDOW TYPES	ACWD	1" IGU, CLR. TEMPERED WHERE REQ'D	STAINED OAK	KYNAR	YES	2 WINDOWS INSTALLED AROUND EXISTING CENTER WOOD JAMB	
26	4	SEE WINDOW TYPES	ACWD	1" IGU, CLR. TEMPERED WHERE REQ'D	STAINED OAK	KYNAR	YES	2 WINDOWS INSTALLED AROUND EXISTING CENTER WOOD JAMB	
27	2	SEE WINDOW TYPES	ACWD	1" IGU, CLR. TEMPERED WHERE REQ'D	STAINED OAK	KYNAR	YES	2 WINDOWS INSTALLED AROUND EXISTING CENTER WOOD JAMB	
28	6	SEE WINDOW TYPES	ACWD	1" IGU, CLR. TEMPERED WHERE REQ'D	STAINED OAK	KYNAR	YES	2 WINDOWS INSTALLED AROUND EXISTING CENTER WOOD JAMB	
29	1	SEE WINDOW TYPES	ACWD	1" IGU, CLR. TEMPERED WHERE REQ'D	STAINED OAK	KYNAR	YES	2 WINDOWS INSTALLED AROUND EXISTING CENTER WOOD JAMB	
30	7	SEE WINDOW TYPES	ACWD	1" IGU, CLR. TEMPERED WHERE REQ'D	STAINED OAK	KYNAR	YES	2 WINDOWS INSTALLED AROUND EXISTING CENTER WOOD JAMB	
30A	6	SEE WINDOW TYPES	ACWD	1" IGU, CLR. TEMPERED WHERE REQ'D	STAINED OAK	KYNAR	YES	2 WINDOWS INSTALLED AROUND EXISTING CENTER WOOD JAMB	
A5	2	SEE WINDOW TYPES	ACWD	1" IGU, CLR. TEMPERED WHERE REQ'D	STAINED OAK	KYNAR	YES	FIRE ESCAPE WINDOW - SEE WINDOW ELEVATION	
A6	2	SEE WINDOW TYPES	ACWD	1" IGU, CLR. TEMPERED WHERE REQ'D	STAINED OAK	KYNAR	YES	FIRE ESCAPE WINDOW - SEE WINDOW ELEVATION	
B1	2	SEE WINDOW TYPES	ACWD	1" IGU, CLR. TEMPERED WHERE REQ'D	STAINED OAK	KYNAR	YES	FIRE ESCAPE WINDOW - SEE WINDOW ELEVATION	
B2	2	SEE WINDOW TYPES	ACWD	1" IGU, CLR. TEMPERED WHERE REQ'D	STAINED OAK	KYNAR	YES	FIRE ESCAPE WINDOW - SEE WINDOW ELEVATION	
B3	2	SEE WINDOW TYPES	ACWD	1" IGU, CLR. TEMPERED WHERE REQ'D	STAINED OAK	KYNAR	YES	FIRE ESCAPE WINDOW - SEE WINDOW ELEVATION	

○ SHEET KEYNOTES
1 EXISTING WOOD CENTER JAMB TO REMAIN

CONSULTANTS



PROJECT

AESC HVAC
UPGRADES

OWNER

ROSWELL
INDEPENDENT
SCHOOL DISTRICT

ADDRESS

300 N. KENTUCKY,
ROSWELL, NM 88201

PROJECT STATUS

CONSTRUCTION
DOCUMENTS

Date: 02-03-2023
Revision: 1
Description: ADDENDUM #1

Date: JANUARY 20, 2023

Project Number: 2022-011

Project File:

Drawn By: JBS

Checked By: RM

Copyright © MCCLAIN + YU ARCHITECTURE AND DESIGN

SHEET TITLE

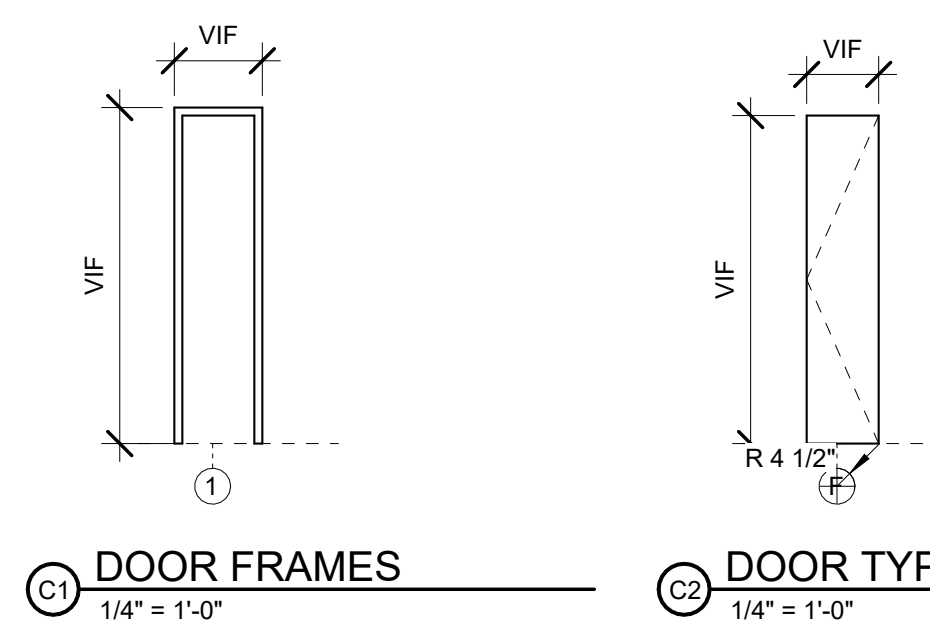
DOOR AND WINDOW
SCHEDULES AND
ELEVATIONS

SHEET

A-602

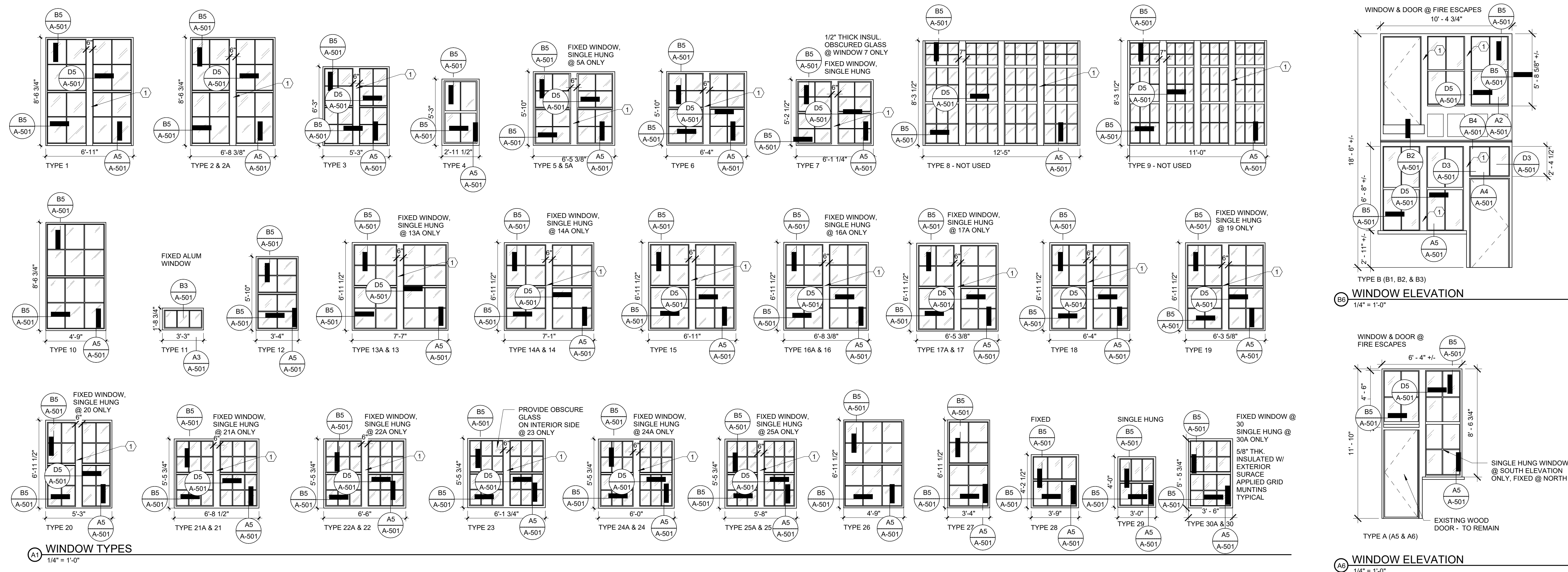
DOOR SCHEDULE													
NO.	SIZE			DOOR		FRAME		DETAILS				COMMENTS	
	WIDTH	HEIGHT	THK	MATERIAL	TYPE	MATERIAL	TYPE	FIRE RATING	HEAD	JAMB	THRESHOLD		SIGN TYPE
119	1'-4"	6'-0 1/2"	0'-2"	HM	F	1	HM	1	1 HR	E3 / A-502	D3 / A-502		V.I.F. ROUGH OPENING DIMENSIONS
124	1'-6 1/2"	6'-0 1/2"	0'-2"	HM	F	1	HM	1	1 HR	E3 / A-502	D3 / A-502		V.I.F. ROUGH OPENING DIMENSIONS
129A	3'-0"	0'-2"	0'-2"	HM	F	2	HM	1	1 HR	E3 / A-502	D3 / A-502	C3 / A-502	V.I.F. ROUGH OPENING DIMENSIONS
129B	4'-0"	0'-2"	0'-2"	HM	F	2	HM	1	1 HR	E3 / A-502	D3 / A-502	C3 / A-502	V.I.F. ROUGH OPENING DIMENSIONS
222	1'-4"	6'-0 1/2"	0'-2"	HM	F	1	HM	1	1 HR	E3 / A-502	D3 / A-502		V.I.F. ROUGH OPENING DIMENSIONS
225	1'-6 1/2"	6'-0 1/2"	0'-2"	HM	F	1	HM	1	1 HR	E3 / A-502	D3 / A-502		V.I.F. ROUGH OPENING DIMENSIONS
316	1'-4"	6'-0 1/2"	0'-2"	HM	F	1	HM	1	1 HR	E3 / A-502	D3 / A-502		V.I.F. ROUGH OPENING DIMENSIONS
322	1'-6 1/2"	6'-0 1/2"	0'-2"	HM	F	1	HM	1	1 HR	E3 / A-502	D3 / A-502		V.I.F. ROUGH OPENING DIMENSIONS
CH01	3'-4"	7'-0"	0'-2"	HM	F	3	HM	1	NONE	E3 / A-502	D3 / A-502	C3 / A-502	PROVIDE 4" HIGH FRAME AT HEAD

HARDWARE
HW-1: 3 HINGE (HVYWT), 1-STOREROOM LOCKSET, BEST SERIES 9K, WITH BEST KEY TO MATCH OWNERS STANDARD, CLOSER, GASKET SET
HW-2: 3 HINGE (HVYWT), 1-STOREROOM LOCKSET, BEST SERIES 9K, WITH BEST KEY TO MATCH OWNERS STANDARD, CLOSER, THRESHOLD, GASKET SET, SWEEP
HW-3: 3 HINGE (HVYWT), 1-STOREROOM LOCKSET, BEST SERIES 9K, WITH BEST KEY TO MATCH OWNERS STANDARD, CLOSER, THRESHOLD, RAIN (GUARD), FRAME BUMPERS



C1 DOOR FRAMES
1/4" = 1'-0"

C2 DOOR TYPES
1/4" = 1'-0"



TYPE B (B1, B2, & B3)

WINDOW ELEVATION
1/4" = 1'-0"

WINDOW AND DOOR @ FIRE ESCAPES
10' - 4 3/4"

WINDOW ELEVATION
1/4" = 1'-0"

WINDOW AND DOOR @ FIRE ESCAPES
6' - 4" +/-

WINDOW ELEVATION
1/4" = 1'-0"

WINDOW AND DOOR @ FIRE ESCAPES
11' - 10"

WINDOW ELEVATION
1/4" = 1'-0"

WINDOW AND DOOR @ FIRE ESCAPES
11' - 10"

WINDOW ELEVATION
1/4" = 1'-0"

WINDOW AND DOOR @ FIRE ESCAPES
11' - 10"

WINDOW ELEVATION
1/4" = 1'-0"

WINDOW AND DOOR @ FIRE ESCAPES
11' - 10"

WINDOW ELEVATION
1/4" = 1'-0"

WINDOW AND DOOR @ FIRE ESCAPES
11' - 10"

WINDOW ELEVATION
1/4" = 1'-0"

WINDOW AND DOOR @ FIRE ESCAPES
11' - 10"

WINDOW ELEVATION
1/4" = 1'-0"

WINDOW AND DOOR @ FIRE ESCAPES
11' - 10"

WINDOW ELEVATION
1/4" = 1'-0"

C:\Users\Michael\Documents\RISD_AESC_studio042kHP8.vrt 2/3/2023 2:44:12 PM